

PROVINCIA DI FORLÌ-CESENA



COMUNE DI SARSINA

PIANO DELLE ATTIVITA' ESTRATTIVE VARIANTE 2011

AMBITO ESTRATTIVO DEL PARA

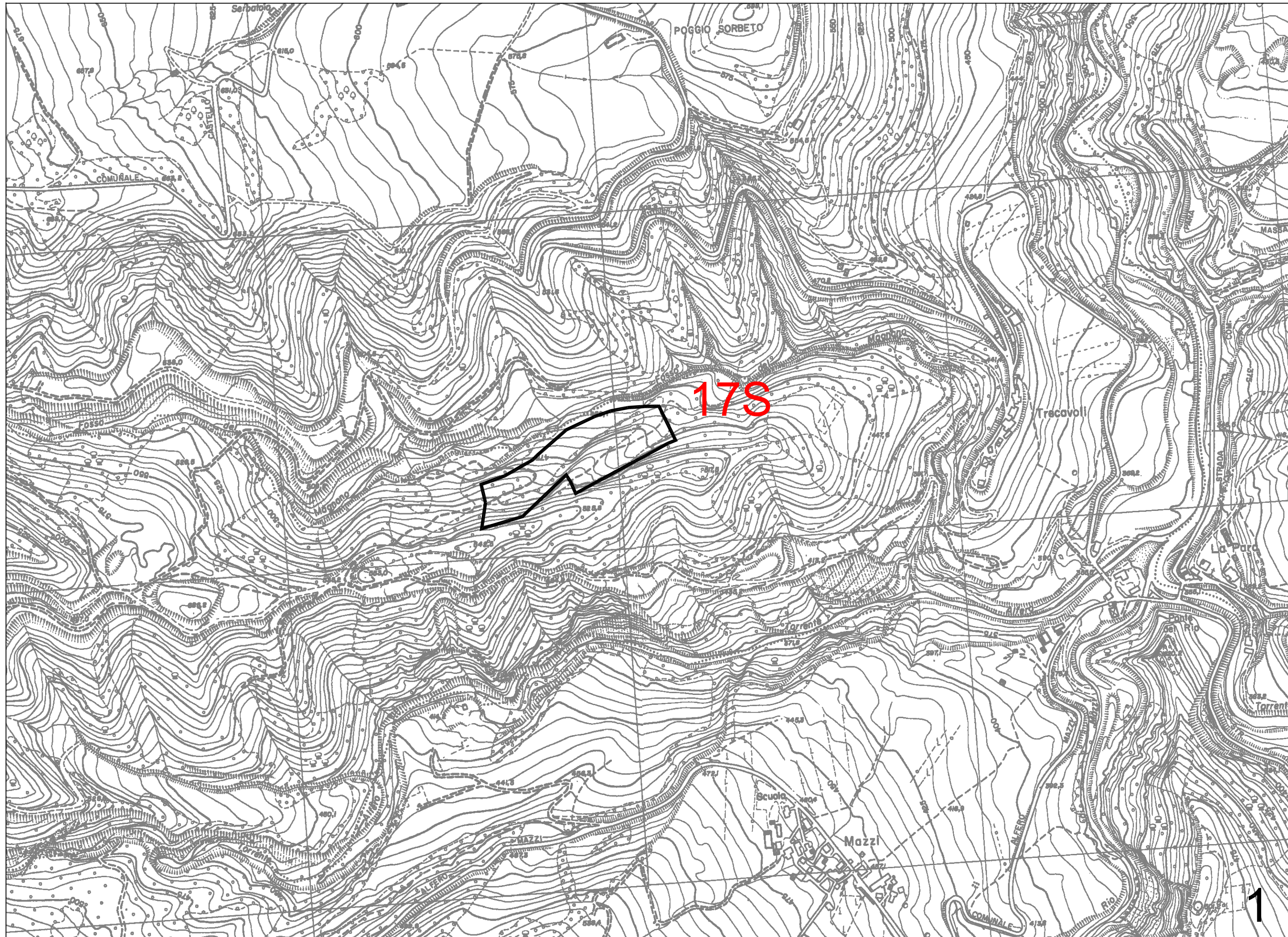
**9a. AMBITO ESTRATTIVO 17S - FOSSO ABBACINI
(MAGNANO) 2**

**TAVOLA 1
ELABORATI GRAFICI**

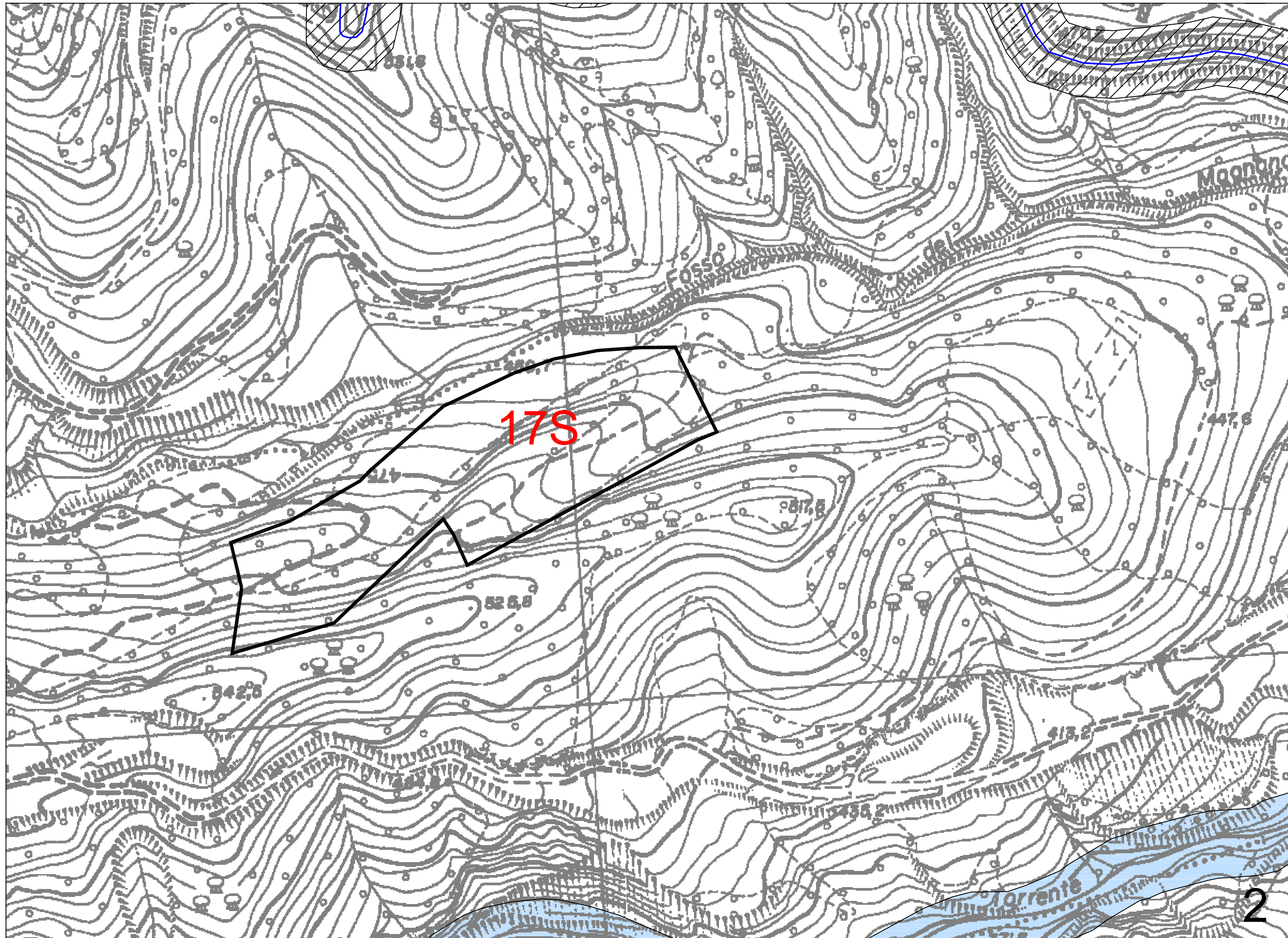
Adottato con Delibera di Consiglio Comunale n° 15 del 30/04/2012
Approvato con Delibera di Consiglio Comunale n° ___ del ___/04/2013

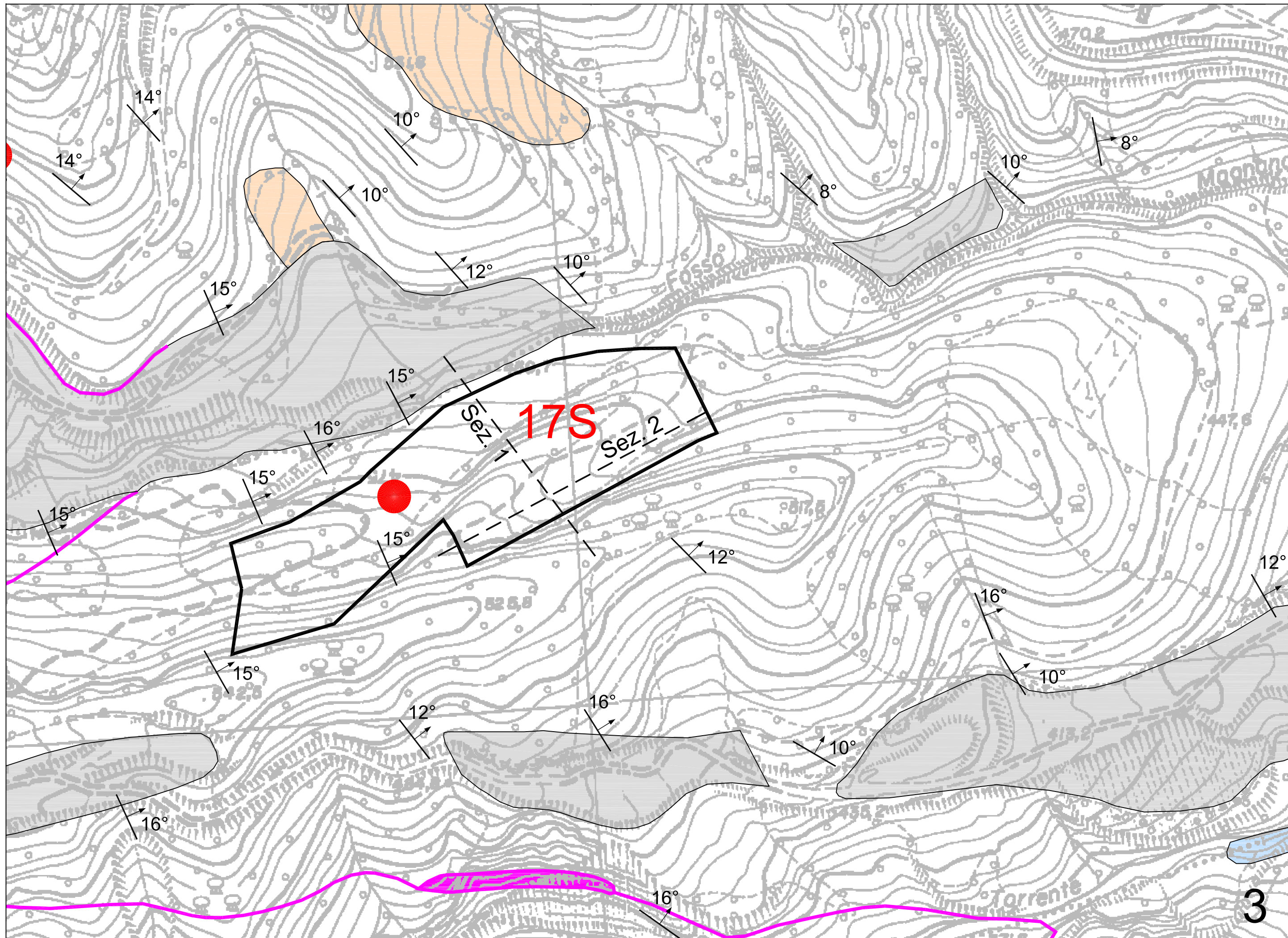
Progettisti:

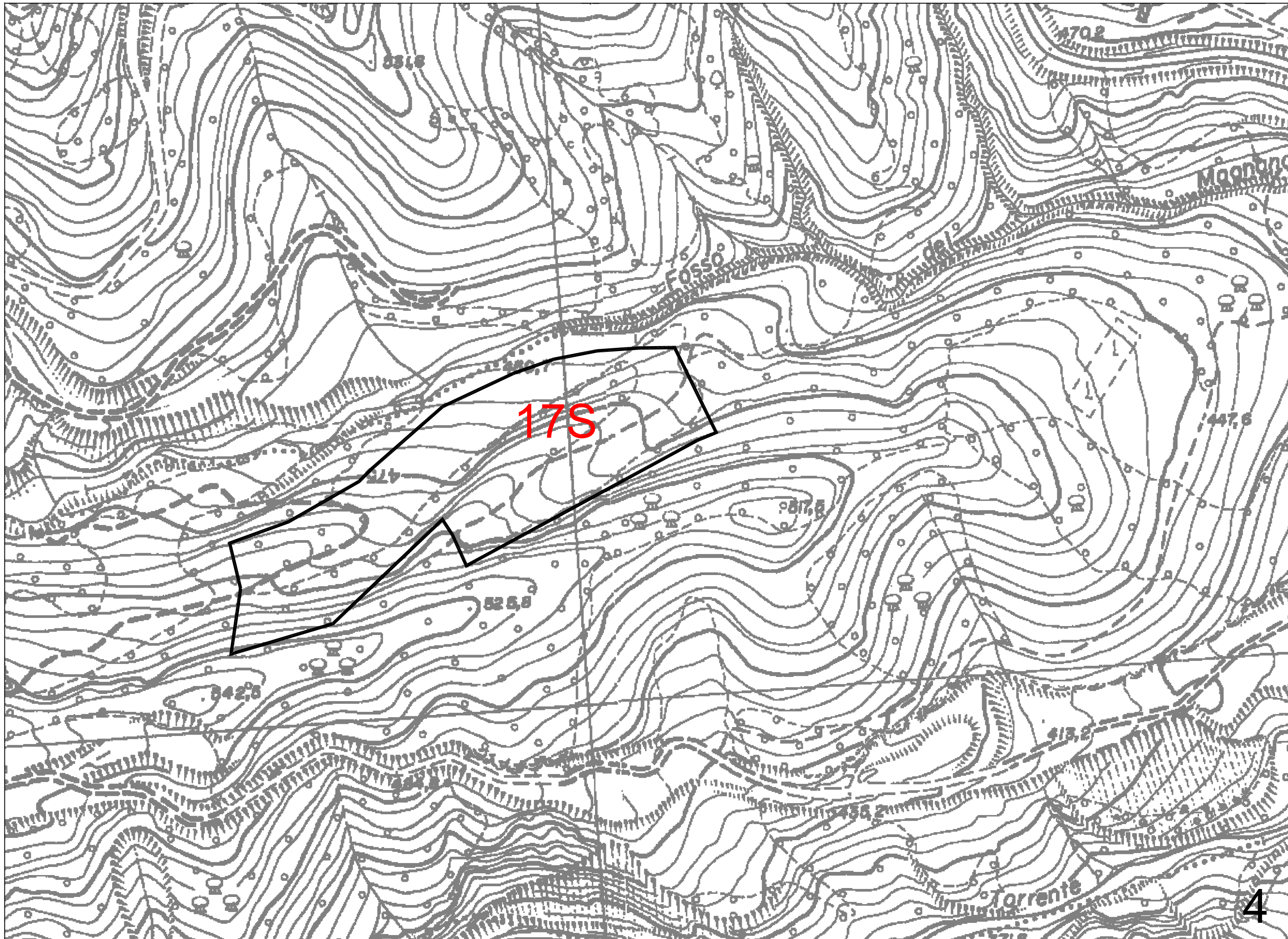
Dott. Geol. Alberto D. Antoniazzi - Dott. Geol. Aldo Antoniazzi



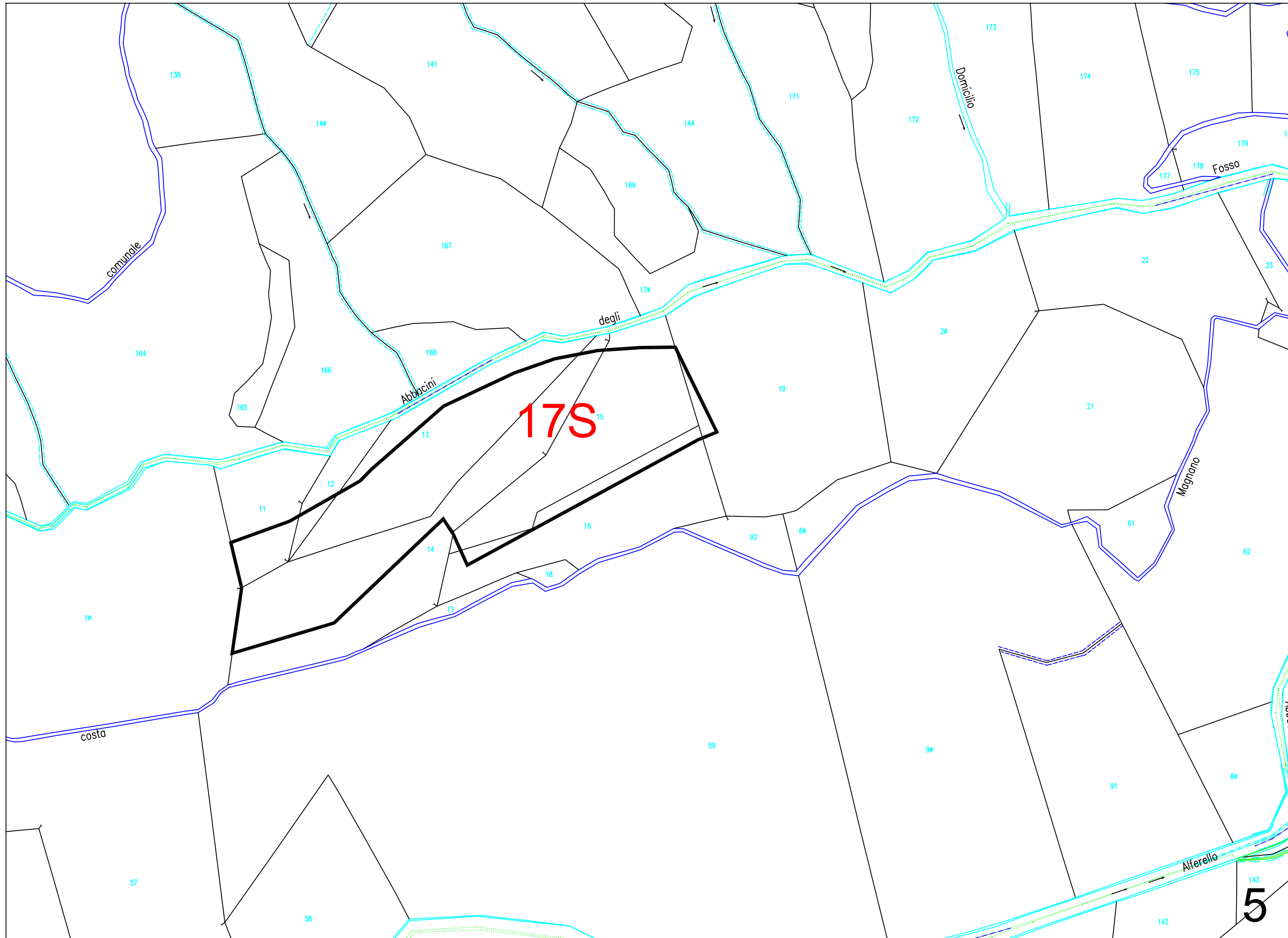
178

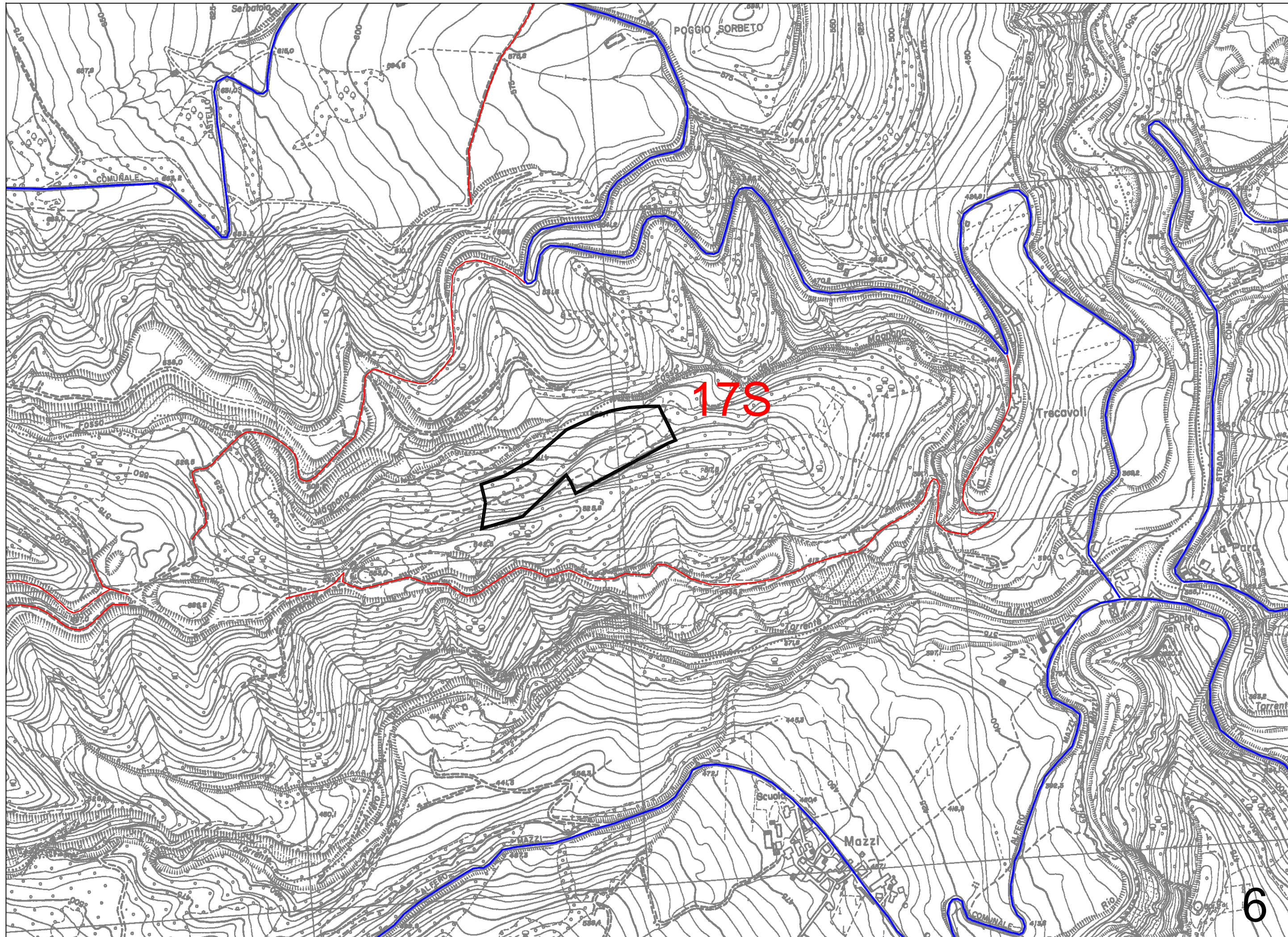




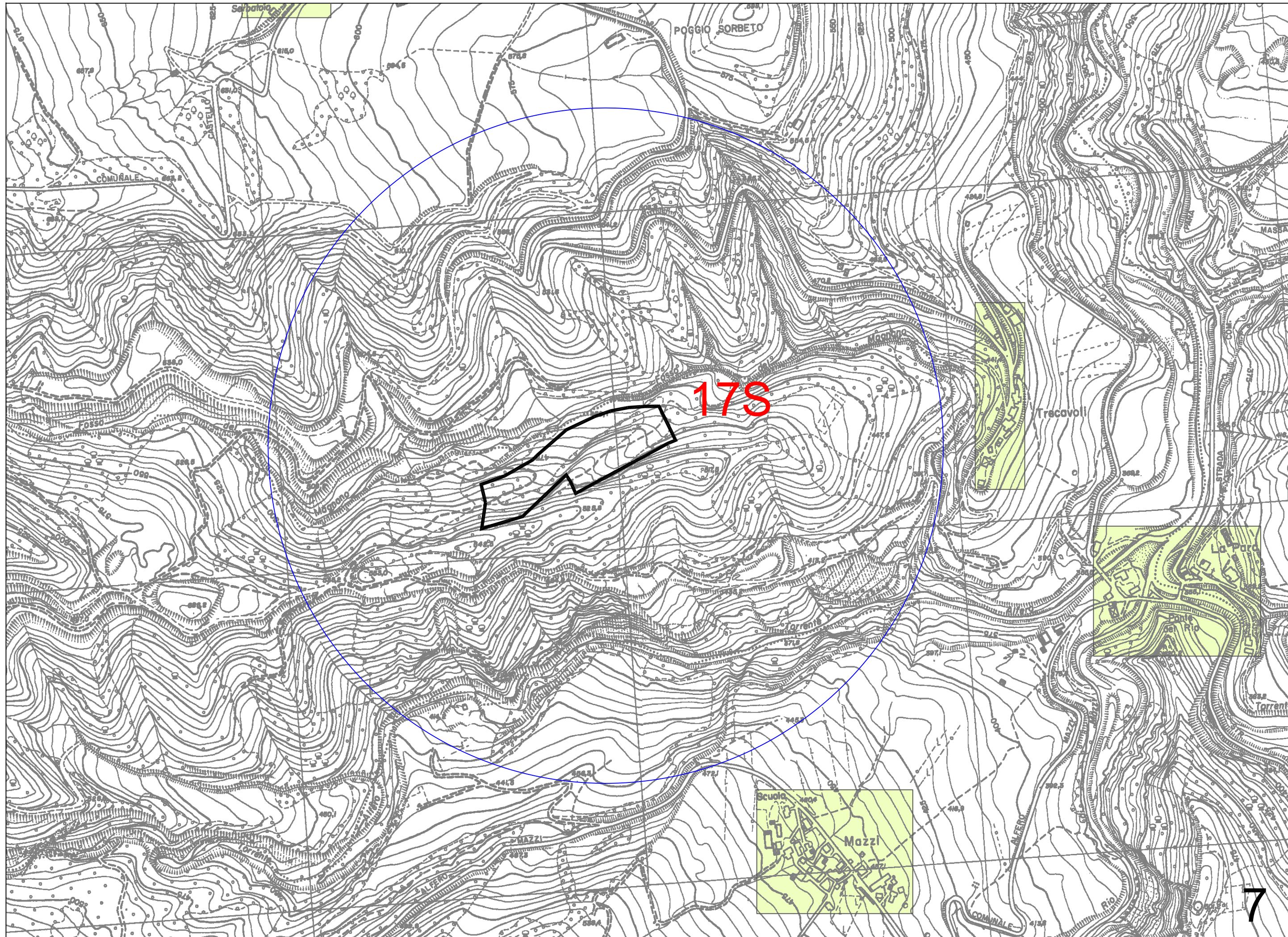


17S

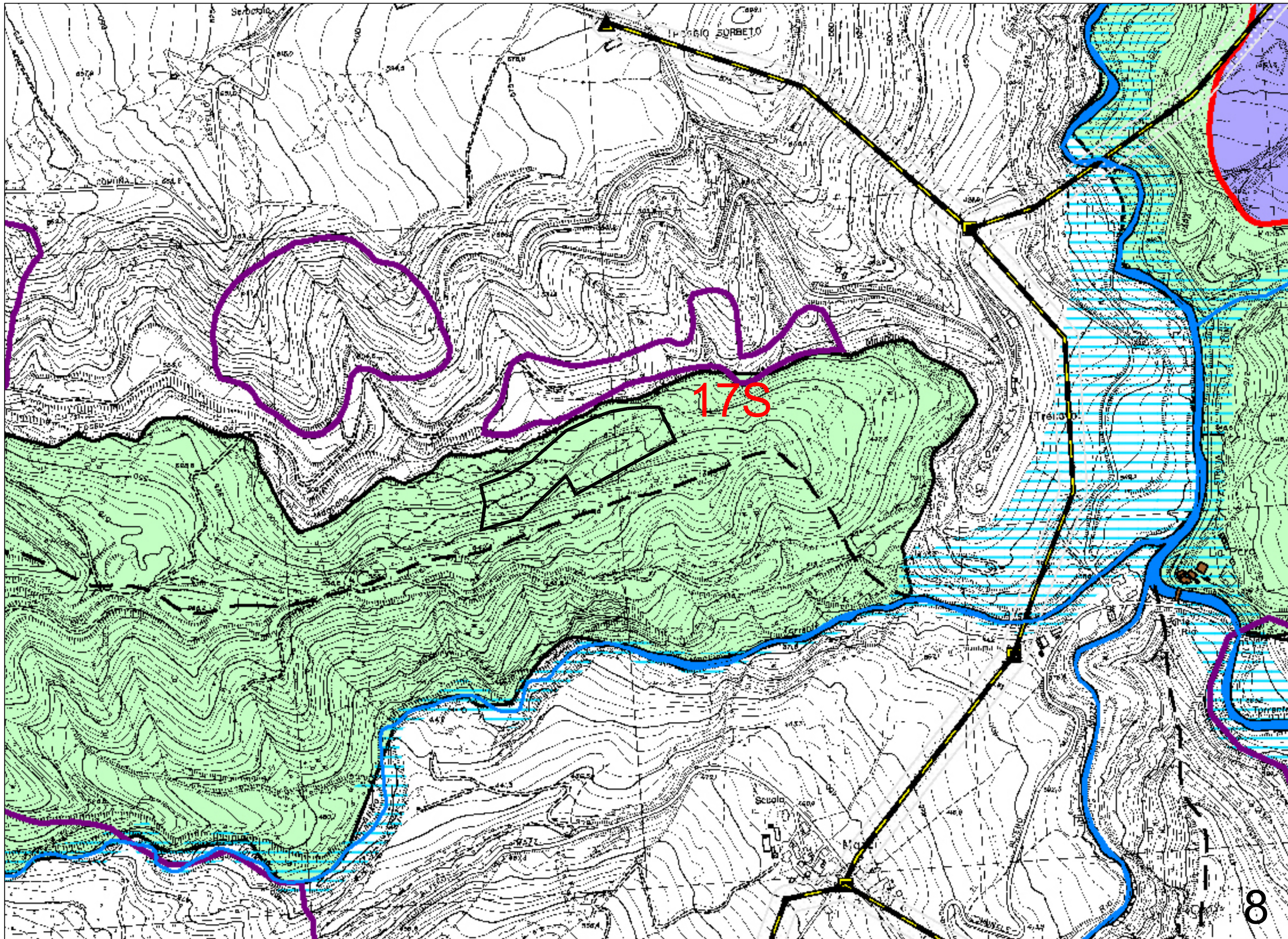




178



178



178